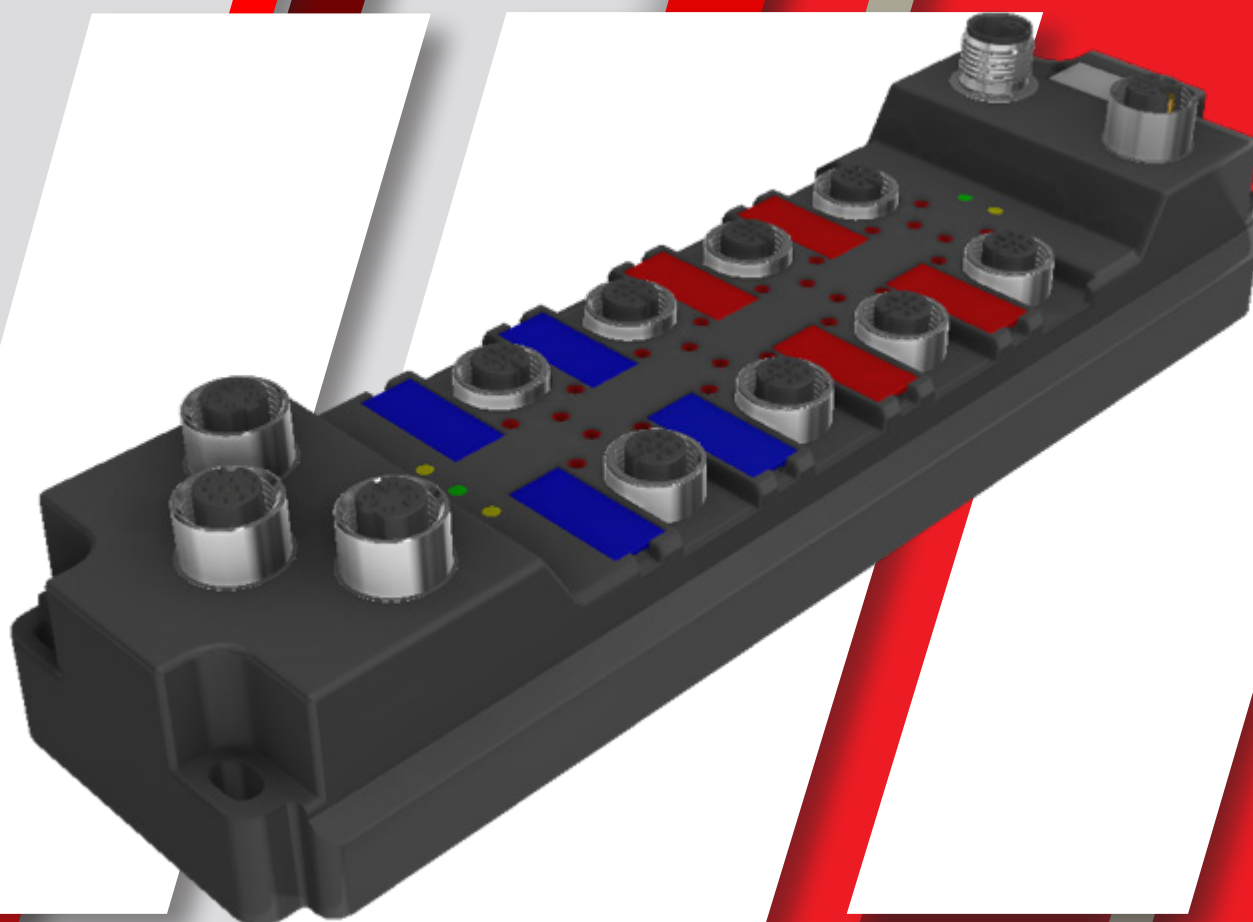


**YOUR
CONNECTIVITY
PARTNER**



**PLC JUNCTION BOX
IP67 - WITH DOUBLE ETHERNET PORTS**

PLC JUNCTION BOX IP67 - WITH DOUBLE ETHERNET PORTS

COMMUNICATION PORT

- ❑ **Connectors:** 2 x M12 4 pins D-coded
- ❑ **Drag-chain:** Available
- ❑ **Protocols:** Ethernet/IP, HTTP, ModBUS, Raw TCP&UDP
- ❑ **2 Ethernet:** 10/100 Mb/s, with internal switch
- ❑ **Static IP:** Available
- ❑ **DHCP:** Available

DEVELOPMENT PORT

- ❑ **Connector:** M12 12 pins
- ❑ **JB config:** via USB slave
- ❑ **SW upload:** via Ethernet/USB, through TaskScript Studio PC program

POWER SUPPLY

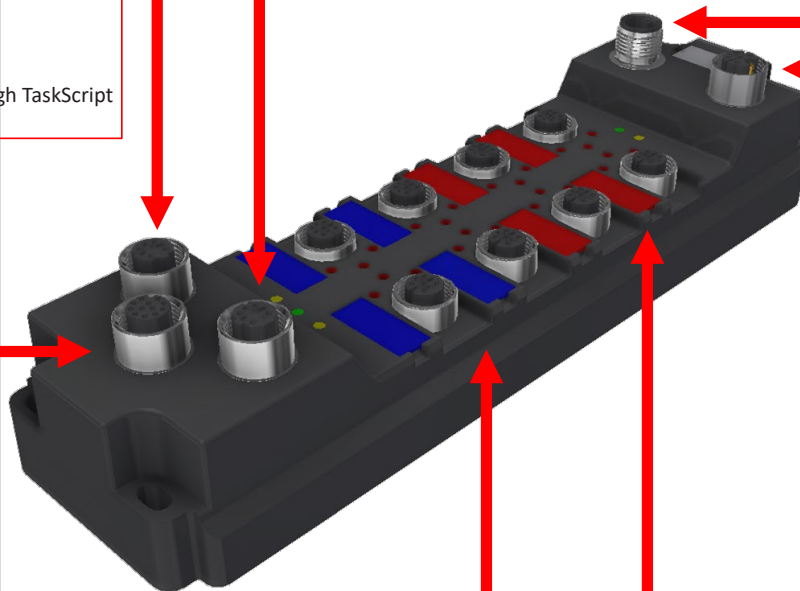
- ❑ **Connectors:** M12 L-coded 5 pin male & female
- ❑ **Drag-chain:** Available
- ❑ **Voltage:** 12~30VDC
- ❑ **Current:** 12A (Max)
- ❑ **Galvanically Insulation:** Available (Sensors / CPU)
- ❑ **Short circuit protection:** Available

INPUT PORTS

- ❑ **Connectors:** 4 x M12 5pins A-coded
- ❑ **N° of Inputs:** 12 (3 channels per port: pins 4,2,5)
- ❑ **Signal type:** Digital (PNP) - 11V, 2 mA
Analog (*only 4 channels) - 0 ~ 10VDC
- ❑ **Sampling time:** < 1ms (synchronous with PLC cycles)
- ❑ **Voltage:** 5 ~ 30VDC (pins 1,3) taken from Vs
- ❑ **counter/Timer:** 1 digital channel (pin4 of port I1) can also be used as fast timer/counter (max frequency: 20kHz)
- ❑ **Sampling time:** < 1ms (synchronous with PLC cycles)

OUTPUT PORTS

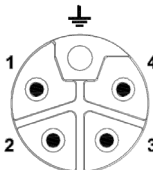
- ❑ **Connectors:** 4xM12 5pins A-coded
- ❑ **N° of Outputs:** 12 (3 channels per port: pin 4,2,5)
- ❑ **Supply Voltage:** 12 ~ 30VDC (pins 1,3) taken from Vs
- ❑ **Signal type:** Digital (PNP) - PWM - Analog
- ❑ **Out Voltage:** Digital (24VDC) - Analog (0~10VDC)
- ❑ **Max current:** 4A (per channel)



PLC JUNCTION BOX IP67 - WITH DOUBLE ETHERNET PORTS

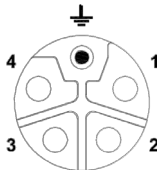
POWER SUPPLY CONNECTORS

M12 L-CODED CONNECTOR
5 POLES MALE



FUNCTION
12~24VDC(Va)
12~24VDC(Vs)

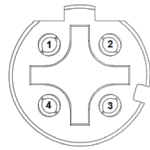
M12 L-CODED CONNECTOR
5 POLES FEMALE



PIN
1 - 2
3 - 4

COMMUNICATION CONNECTORS

2X M12 D-CODED CONNECTOR
4 POLES FEMALE



FUNCTION
+TX
-TX
+RX
-RX

PIN
1
3
2
4

DEVELOPMENT CONNECTOR

M12 A-CODED CONNECTOR 12
POLES FEMALE

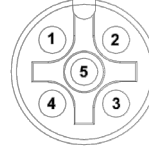


FUNCTION
USB comm.
BUS/Eth. comm.

PIN
2 - 3 - 4 - 5
6 - 7 - 8 - 9

I / O CONNECTORS

M12 A-CODED CONNECTOR 5
POLES FEMALE



FUNCTION
POWER SUPPLY
I/O SIGNAL

PIN
1 - 3
2 - 4 - 5

PROGRAMMING INFORMATION

TASKSCRIPT (SFC, FB)

EASY INTEGRATION OF ARITHMETIC EXPRESSIONS INTO LOGIC FLOW
EASY DEFINITION OF PARALLEL COMPUTATIONS
PRECISE HANDLING OF I/O TIMING (WITHIN +- 1MS)



PROGRAMMING LANGUAGE

APPLICATION TASKS

SFC STEPS
PARALLEL THREADS
PROGRAMMING INTERFACE
CYCLE TIME (AVERAGE)
I/O REFRESH TIME (AVERAGE)

16
160
16
ETHERNET - USB
< 1 ms
< 1 ms
1024

BOOLEAN VARIABLES

Centralized edge computation

ARITHMETIC VARIABLES

TIMERS/COUNTERS
LOCALLY PERSISTED DATA

Easy handling of inverted logic I/os
220 (2 byte each, two's complement arithmetic)
120 (range from 1ms to 160 days)
SURVIVE POWER CYCLES (15 WORDS)

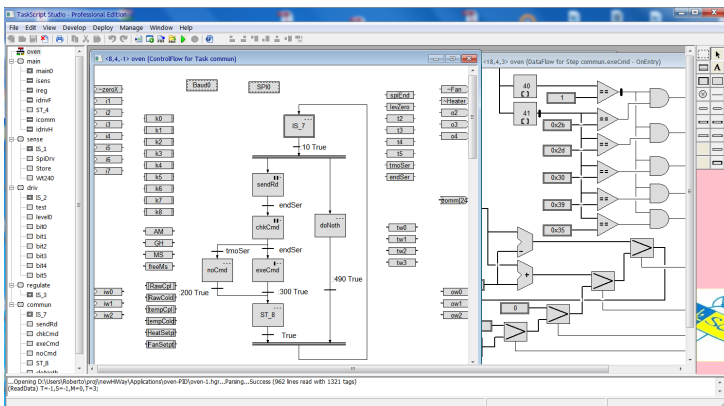
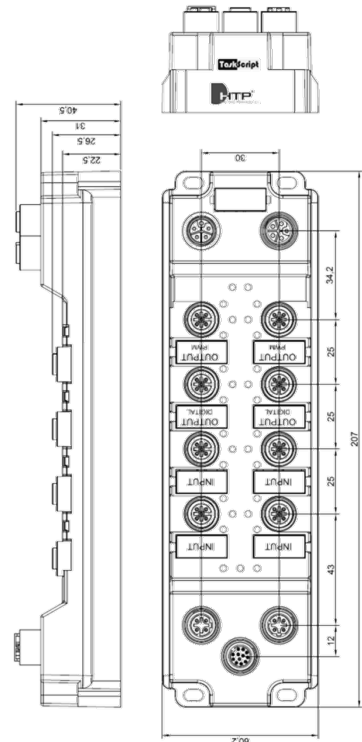
DEVELOPMENT

TASKSCRIPT STUDIO IDE

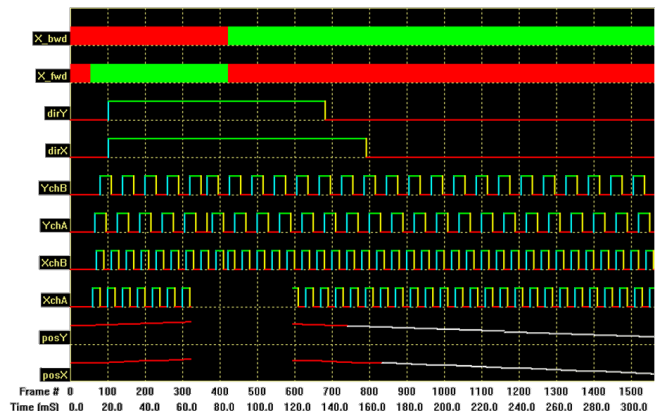
PC-WINDOWS GRAPHIC APPLICATION FOR DEVELOPMENT, SIMULATION, DEBUG, STATE DOWNLOAD

POST COMPILE CONFIG

SUPPORTS CUSTOMIZATION OF CONFIGURATION DATA WITHOUT NEED TO RECOMPILE AND RELOAD (E.G. DEPLOY SAME PROGRAM ON MANY DEVICES, THEN CHANGE CONFIG)



Example of Task Script studio Gratic Application



Example of Task Script studio Simulation/Debug Chart in real time



VALVE CONNECTORS



M8 CONNECTORS



M12 CONNECTORS



7/8" CONNECTORS



M23 CONNECTORS



DISTRIBUTION BOXES



AUTOMOTIVE CONNECTORS



SPECIAL CONNECTORS



INDUSTRIAL LIGHTING

HTP HIGH TECH PRODUCTS S.R.L.

Headquarters: Via Lesina, 45 - 24030 - Brembate di Sopra (BG) Italia **Italian Factory:** Via Nardi, 11 - 43029 - Traversetolo (PR) Italia

 info@webhtp.eu

 +39.035692509

 [HTP-HIGH-TECH-PRODUCTS-SRL](https://www.facebook.com/HTP-HIGH-TECH-PRODUCTS-SRL)



www.webhtp.eu